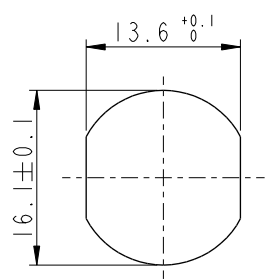


THIS DOCUMENT IS SUBJECT TO CHANGE WITHOUT NOTICE. IT IS CONFIDENTIAL AND A PROPERTY OF Amphenol LTW. DISCLOSURE TO THIRD PARTY HAS TO BE AUTHORIZED BY Amphenol LTW.

REV.	ECN NO.	DATE	SIGN	DESCRIPTION
C	LEN1690149-150	2016/08/24	Yulong_wang	Add 3, 5 Pin & IP69K.
D	C201469	2020/09/25	Ruru	$\triangle D$ X6
E	C210309	2021/02/26	Ruru	$\triangle E$ X2

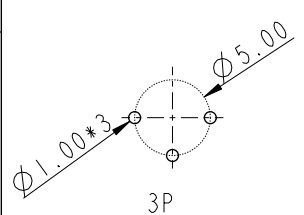
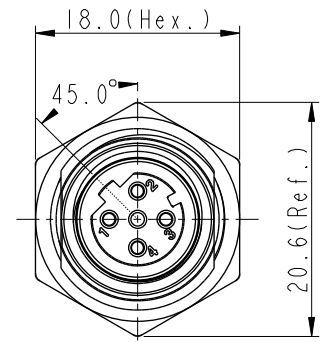
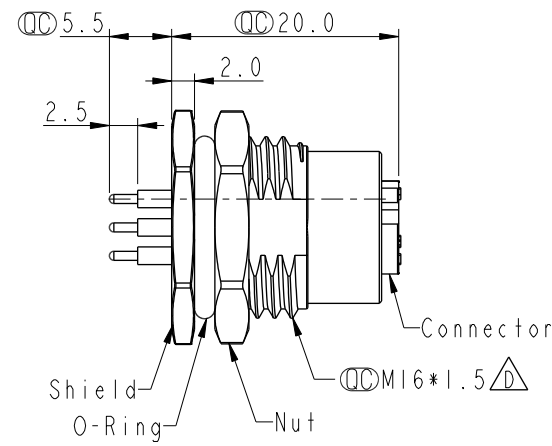
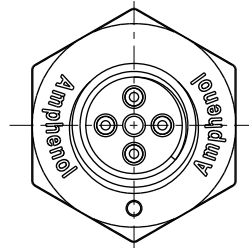


Recommended Panel Cut-Out

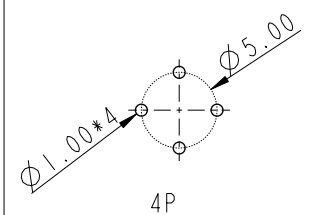


M12D-XXPFFP-SF8002

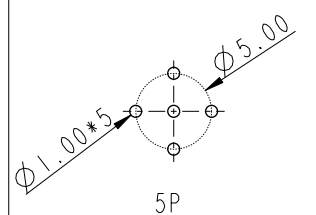
XX: No. Of Pin



3P

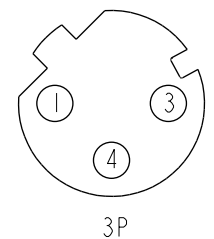


4P

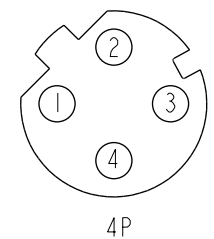


5P

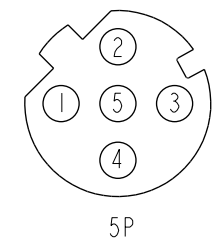
PCB Layout



3P



4P



5P

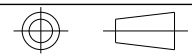
Pin Assignment Front View



Note:

- \* RoHS Compliant
- \*  $\text{CC}$  Important dimension
- $\triangle C$ \* Waterproof rate: IPX8, unmatd 1m/24h  
IPX9K, unmatd
- \* Connector  
Housing: Thermoplastic, Black  
Pin: Copper alloy, Gold plated  
O-Ring: Rubber, Green
- \* Shield: Metal
- \* Nut: Metal
- \* O-Ring: Rubber, Black
- \* For panel thickness max: 4.5mm
- \* Nut is packed separately in pe bag

UNIT: mm



TITLE N SEN, M12 D, SCREW RECEPTACLE, F, F, PCB S $\triangle E$			
SCALE 3:2	SIZE A4	SHEET 1 OF 1	
REV. E	WC-REV. A.5	$\text{CC}$ : Inspection item	

**Amphenol LTW**

安費諾亮泰企業股份有限公司

ITEM NO.	DRAWN BY Yulong_wang	DATE 2016-08-24
DWG NO. $\triangle A$ M12D-XXPFFP-SF8002	CHECKED BY Cary	DATE 2016-08-24
CUSTOMER ALTW	APPROVED BY Jerry	DATE 2016-08-24