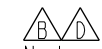
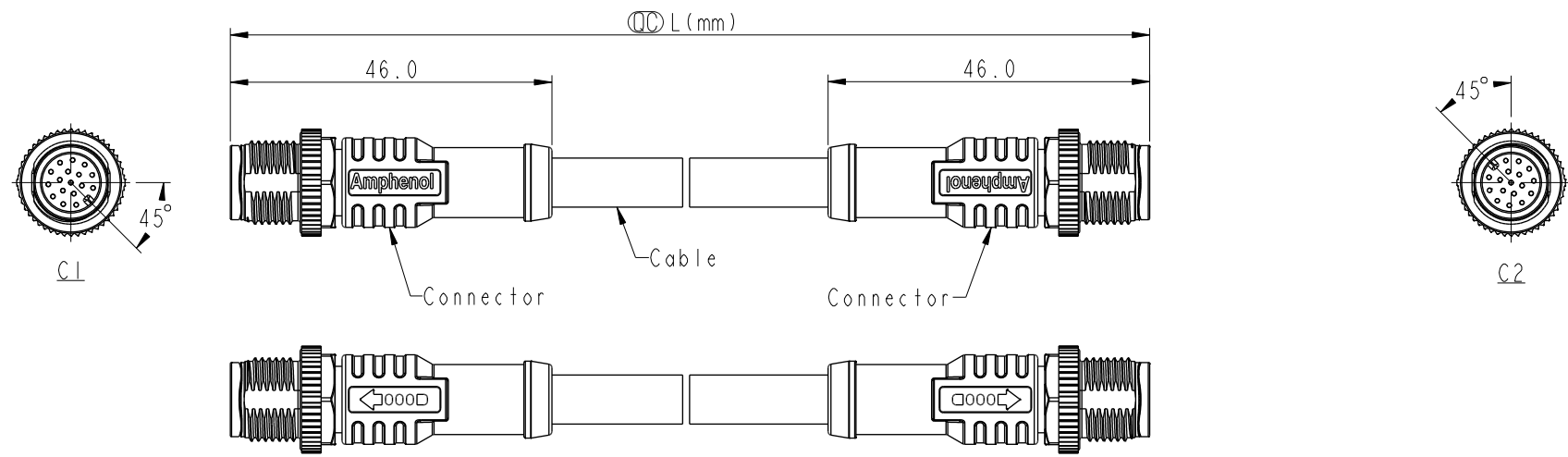


THIS DOCUMENT IS SUBJECT TO CHANGE WITHOUT NOTICE. IT IS CONFIDENTIAL AND A PROPERTY OF Amphenol LTW. DISCLOSURE TO THIRD PARTY HAS TO BE AUTHORIZED BY Amphenol LTW.

| REV. | ECN NO. | DATE | SIGN | DESCRIPTION |
|------|--------------|------------|-------|------------------|
| B | C201756 & 57 | 2020/11/16 | Vicky | $\triangle B$ X5 |
| C | C210022 | 2021/01/07 | Vicky | $\triangle C$ X1 |
| D | C210228 | 2021/04/01 | Vicky | $\triangle D$ X4 |



Note:

- * RoHS Compliant
- * $\circ L$ Important dimension
- * Waterproof rate: IPX8, mated 1m/24h
IPX9K, mated
- * Connector
 - Housing: Thermoplastic, Black
 - Pin: Copper alloy, Gold plated
- $\triangle C$ Nut: Metal
 - Outer Mold: Thermoplastic, Black
- * Cable: UL2517, PVC Jacket, Black
- * Cable Length Tolerance:

| | | | |
|----------|---|-----|--------------|
| 0.5M < L | ≤ | 1M | : +60/-0 mm |
| 1M < L | ≤ | 3M | : +120/-0 mm |
| 3M < L | ≤ | 5M | : +160/-0 mm |
| 5M < L | ≤ | 10M | : ±100 mm |
| 10M < L | ≤ | 20M | : ±200 mm |
| 20M < L | ≤ | 30M | : ±300 mm |
| 30M < L | ≤ | 99M | : ±500 mm |

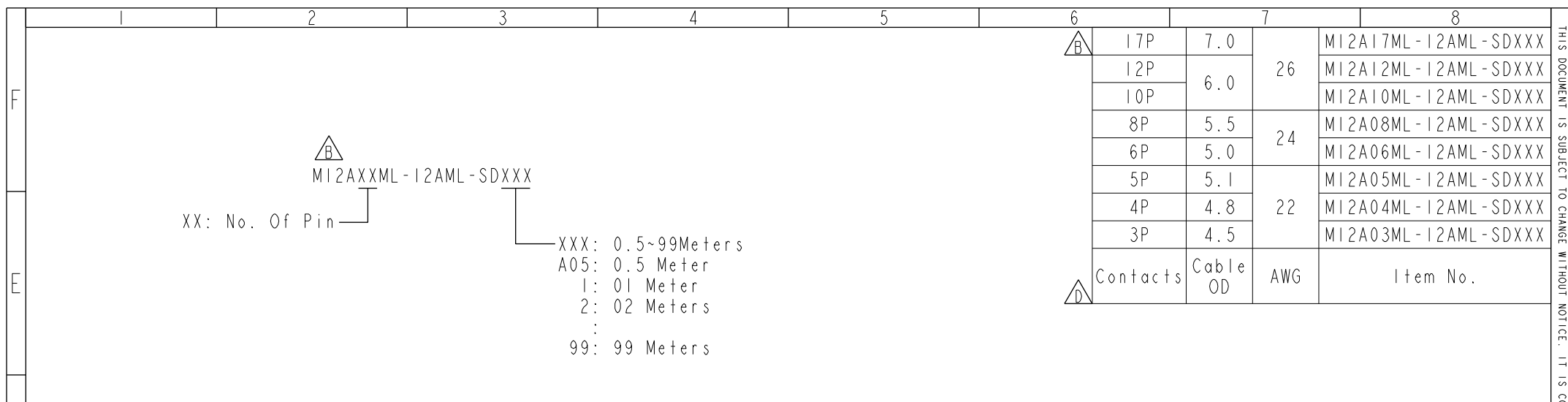
| | | |
|-----------|--------|--|
| UNIT: mm | | |
| TOLERANCE | ±0.5mm | |

| | | |
|---|----------------|-----------------------------|
| TITLE ACC, SEN, A Code, DB-ENDED $\triangle D$ MM | | |
| SCALE 1:2 | SIZE A4 | SHEET 1 OF 2 |
| REV. D | WC-REV. A.5 | $\circ L$: Inspection item |

Amphenol LTW
安費諾亮泰企業股份有限公司

| | | |
|---|--------------------|--------------------|
| ITEM NO. | DRAWN BY Vicky | DATE 2018-12-07 |
| DWG NO. $\triangle A$ MI2AXXML-12AML-SDXXX | CHECKED BY Rita | DATE 2018-12-07 |
| CUSTOMER ALTW | APPROVED BY Max | DATE 2018-12-07 |

THIS DOCUMENT IS SUBJECT TO CHANGE WITHOUT NOTICE. IT IS CONFIDENTIAL AND A PROPERTY OF Amphenol LTW. DISCLOSURE TO THIRD PARTY HAS TO BE AUTHORIZED BY Amphenol LTW.



| | | | | |
|---|-----|----------|----|----------------------|
| B | 17P | 7.0 | 26 | M12A17ML-12AML-SDXXX |
| | 12P | 6.0 | | M12A12ML-12AML-SDXXX |
| | 10P | | | M12A10ML-12AML-SDXXX |
| | 8P | 5.5 | 24 | M12A08ML-12AML-SDXXX |
| | 6P | 5.0 | | M12A06ML-12AML-SDXXX |
| | 5P | 5.1 | | M12A05ML-12AML-SDXXX |
| | 4P | 4.8 | 22 | M12A04ML-12AML-SDXXX |
| | 3P | 4.5 | | M12A03ML-12AML-SDXXX |
| | D | Contacts | | Cable OD |

| Pin Out | Wire | Wire | Wire | Wire | Wire | Wire | Wire | Wire | Wire | Wire | Wire | Wire | Wire |
|-----------------|-----------------|-----------------|-----------------|-----------------|-----------------|-----------------|-----------------|-----------------|-----------------|-----------------|-----------------|-----------------|-----------------|
| 5 -- | 5 -- | 5 Gray | 5 -- | 5 -- | 5 -- | 5 -- | 5 -- | 5 -- | 5 -- | 5 -- | 5 -- | 5 -- | 5 -- |
| 4 Black | 4 Black | 4 Black | 4 Black | 4 Black | 4 Black | 4 Black | 4 Black | 4 Black | 4 Black | 4 Black | 4 Black | 4 Black | 4 Black |
| 3 Blue | 3 Blue | 3 Blue | 3 Blue | 3 Blue | 3 Blue | 3 Blue | 3 Blue | 3 Blue | 3 Blue | 3 Blue | 3 Blue | 3 Blue | 3 Blue |
| 2 -- | 2 White | 2 White | 2 White | 2 White | 2 White | 2 White | 2 White | 2 White | 2 White | 2 White | 2 White | 2 White | 2 White |
| 1 Brown | 1 Brown | 1 Brown | 1 Brown | 1 Brown | 1 Brown | 1 Brown | 1 Brown | 1 Brown | 1 Brown | 1 Brown | 1 Brown | 1 Brown | 1 Brown |
| 12 -- | 12 Red/Blue | 12 Red/Blue | 12 Red/Blue | 12 Red/Blue | 12 Red/Blue | 12 Red/Blue | 12 Red/Blue | 12 Red/Blue | 12 Red/Blue | 12 Red/Blue | 12 Red/Blue | 12 Red/Blue | 12 Red/Blue |
| 11 -- | 11 Gray/Pink | 11 Gray/Pink | 11 Gray/Pink | 11 Gray/Pink | 11 Gray/Pink | 11 Gray/Pink | 11 Gray/Pink | 11 Gray/Pink | 11 Gray/Pink | 11 Gray/Pink | 11 Gray/Pink | 11 Gray/Pink | 11 Gray/Pink |
| 10 Violet | 10 Violet | 10 Violet | 10 Violet | 10 Violet | 10 Violet | 10 Violet | 10 Violet | 10 Violet | 10 Violet | 10 Violet | 10 Violet | 10 Violet | 10 Violet |
| 9 Black | 9 Black | 9 Black | 9 Black | 9 Black | 9 Black | 9 Black | 9 Black | 9 Black | 9 Black | 9 Black | 9 Black | 9 Black | 9 Black |
| 8 Red | 8 Red | 8 Red | 8 Red | 8 Red | 8 Red | 8 Red | 8 Red | 8 Red | 8 Red | 8 Red | 8 Red | 8 Red | 8 Red |
| 7 Blue | 7 Blue | 7 Blue | 7 Blue | 7 Blue | 7 Blue | 7 Blue | 7 Blue | 7 Blue | 7 Blue | 7 Blue | 7 Blue | 7 Blue | 7 Blue |
| 6 Pink | 6 Pink | 6 Pink | 6 Pink | 6 Pink | 6 Pink | 6 Pink | 6 Pink | 6 Pink | 6 Pink | 6 Pink | 6 Pink | 6 Pink | 6 Pink |
| 5 Gray | 5 Gray | 5 Gray | 5 Gray | 5 Gray | 5 Gray | 5 Gray | 5 Gray | 5 Gray | 5 Gray | 5 Gray | 5 Gray | 5 Gray | 5 Gray |
| 4 Yellow | 4 Yellow | 4 Yellow | 4 Yellow | 4 Yellow | 4 Yellow | 4 Yellow | 4 Yellow | 4 Yellow | 4 Yellow | 4 Yellow | 4 Yellow | 4 Yellow | 4 Yellow |
| 3 Green | 3 Green | 3 Green | 3 Green | 3 Green | 3 Green | 3 Green | 3 Green | 3 Green | 3 Green | 3 Green | 3 Green | 3 Green | 3 Green |
| 2 Brown | 2 Brown | 2 Brown | 2 Brown | 2 Brown | 2 Brown | 2 Brown | 2 Brown | 2 Brown | 2 Brown | 2 Brown | 2 Brown | 2 Brown | 2 Brown |
| 1 White | 1 White | 1 White | 1 White | 1 White | 1 White | 1 White | 1 White | 1 White | 1 White | 1 White | 1 White | 1 White | 1 White |
| 17 White/Gray | 17 White/Gray | 17 White/Gray | 17 White/Gray | 17 White/Gray | 17 White/Gray | 17 White/Gray | 17 White/Gray | 17 White/Gray | 17 White/Gray | 17 White/Gray | 17 White/Gray | 17 White/Gray | 17 White/Gray |
| 16 Yellow/Brown | 16 Yellow/Brown | 16 Yellow/Brown | 16 Yellow/Brown | 16 Yellow/Brown | 16 Yellow/Brown | 16 Yellow/Brown | 16 Yellow/Brown | 16 Yellow/Brown | 16 Yellow/Brown | 16 Yellow/Brown | 16 Yellow/Brown | 16 Yellow/Brown | 16 Yellow/Brown |
| 15 White/Yellow | 15 White/Yellow | 15 White/Yellow | 15 White/Yellow | 15 White/Yellow | 15 White/Yellow | 15 White/Yellow | 15 White/Yellow | 15 White/Yellow | 15 White/Yellow | 15 White/Yellow | 15 White/Yellow | 15 White/Yellow | 15 White/Yellow |
| 14 Brown/Green | 14 Brown/Green | 14 Brown/Green | 14 Brown/Green | 14 Brown/Green | 14 Brown/Green | 14 Brown/Green | 14 Brown/Green | 14 Brown/Green | 14 Brown/Green | 14 Brown/Green | 14 Brown/Green | 14 Brown/Green | 14 Brown/Green |
| 13 White/Green | 13 White/Green | 13 White/Green | 13 White/Green | 13 White/Green | 13 White/Green | 13 White/Green | 13 White/Green | 13 White/Green | 13 White/Green | 13 White/Green | 13 White/Green | 13 White/Green | 13 White/Green |
| 12 Red/Blue | 12 Red/Blue | 12 Red/Blue | 12 Red/Blue | 12 Red/Blue | 12 Red/Blue | 12 Red/Blue | 12 Red/Blue | 12 Red/Blue | 12 Red/Blue | 12 Red/Blue | 12 Red/Blue | 12 Red/Blue | 12 Red/Blue |
| 11 Gray/Pink | 11 Gray/Pink | 11 Gray/Pink | 11 Gray/Pink | 11 Gray/Pink | 11 Gray/Pink | 11 Gray/Pink | 11 Gray/Pink | 11 Gray/Pink | 11 Gray/Pink | 11 Gray/Pink | 11 Gray/Pink | 11 Gray/Pink | 11 Gray/Pink |
| 10 Violet | 10 Violet | 10 Violet | 10 Violet | 10 Violet | 10 Violet | 10 Violet | 10 Violet | 10 Violet | 10 Violet | 10 Violet | 10 Violet | 10 Violet | 10 Violet |
| 9 Red | 9 Red | 9 Red | 9 Red | 9 Red | 9 Red | 9 Red | 9 Red | 9 Red | 9 Red | 9 Red | 9 Red | 9 Red | 9 Red |
| 8 Gray | 8 Gray | 8 Gray | 8 Gray | 8 Gray | 8 Gray | 8 Gray | 8 Gray | 8 Gray | 8 Gray | 8 Gray | 8 Gray | 8 Gray | 8 Gray |
| 7 Black | 7 Black | 7 Black | 7 Black | 7 Black | 7 Black | 7 Black | 7 Black | 7 Black | 7 Black | 7 Black | 7 Black | 7 Black | 7 Black |
| 6 Yellow | 6 Yellow | 6 Yellow | 6 Yellow | 6 Yellow | 6 Yellow | 6 Yellow | 6 Yellow | 6 Yellow | 6 Yellow | 6 Yellow | 6 Yellow | 6 Yellow | 6 Yellow |
| 5 Pink | 5 Pink | 5 Pink | 5 Pink | 5 Pink | 5 Pink | 5 Pink | 5 Pink | 5 Pink | 5 Pink | 5 Pink | 5 Pink | 5 Pink | 5 Pink |
| 4 Green | 4 Green | 4 Green | 4 Green | 4 Green | 4 Green | 4 Green | 4 Green | 4 Green | 4 Green | 4 Green | 4 Green | 4 Green | 4 Green |
| 3 White | 3 White | 3 White | 3 White | 3 White | 3 White | 3 White | 3 White | 3 White | 3 White | 3 White | 3 White | 3 White | 3 White |
| 2 Blue | 2 Blue | 2 Blue | 2 Blue | 2 Blue | 2 Blue | 2 Blue | 2 Blue | 2 Blue | 2 Blue | 2 Blue | 2 Blue | 2 Blue | 2 Blue |
| 1 Brown | 1 Brown | 1 Brown | 1 Brown | 1 Brown | 1 Brown | 1 Brown | 1 Brown | 1 Brown | 1 Brown | 1 Brown | 1 Brown | 1 Brown | 1 Brown |

Pin Assignments Front View

| | | | | | | | | | | | | | |
|---|-----------|--------|-------|----------------------------|--------------------------|---------|-----|----------|-----------------|-------------|------------|------|------------|
| A | UNIT:mm | | TITLE | ACC, SEN, A Code, DB-ENDED | 安費諾亮泰企業股份有限公司 | ITEM NO | | DRAWN BY | Vicky | DATE | 2018-12-07 | | |
| | TOLERANCE | ±0.5mm | SCALE | 1:2 | | SIZE | A4 | SHEET | 2 OF 2 | CHECKED BY | Rita | DATE | 2018-12-07 |
| | | | REV. | D | | WC-REV. | A.5 | CC | Inspection item | APPROVED BY | Max | DATE | 2018-12-07 |
| | | | | | | | | | | CUSTOMER | ALTW | | |