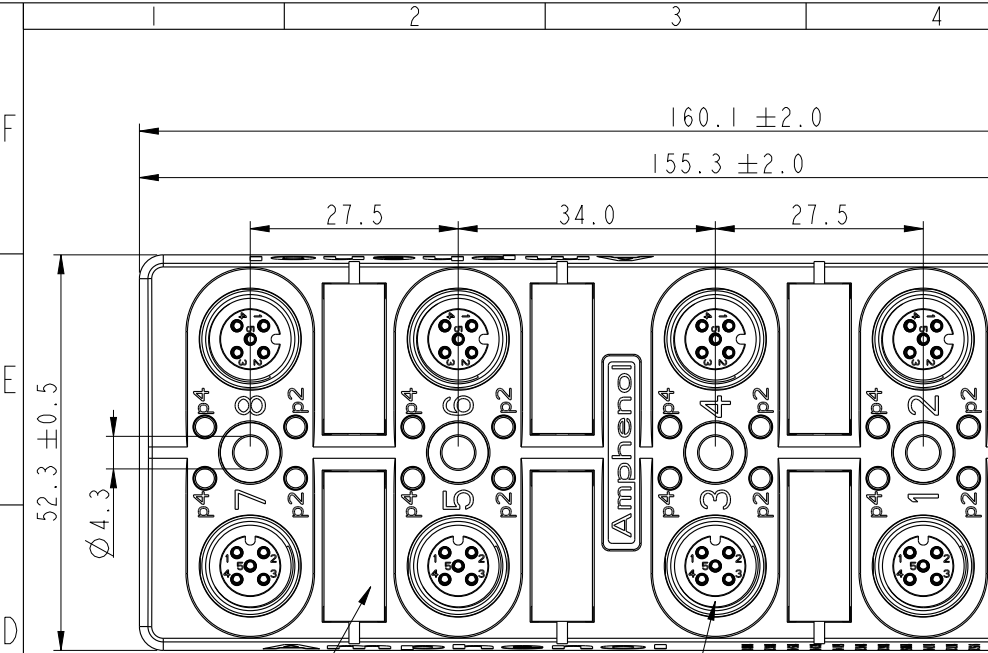
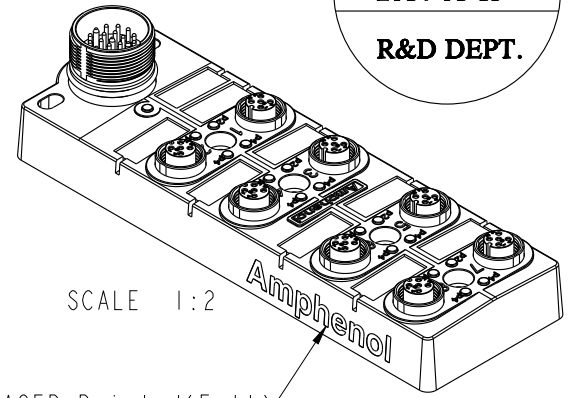
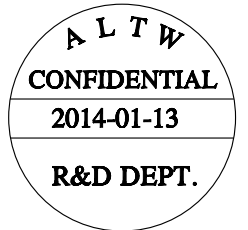


REV.	ECN NO.	DATE	SIGN	DESCRIPTION



- 5 O-ring
- 6 O-ring



SCALE 1:2

LASER Printed(Full)

Note:

Electrical:

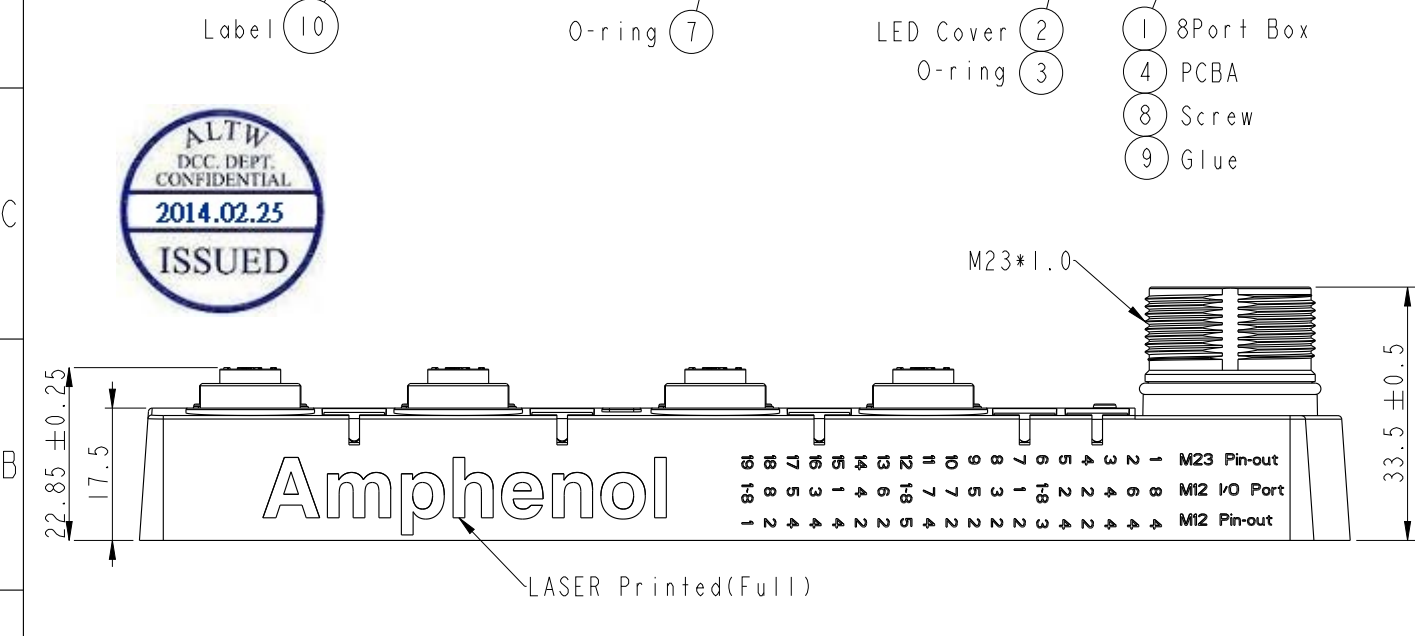
- \* Voltage: 10~30V DCMax.
- \* Current per Port: 4A
- \* Current Sum Max.: 12A
- \* Power indicator: 1\*LED, Green
- \* Function Indicator: 16 \* LED Yellow
- \* Sensor Connections: M12\*1, 5-pole Female
- \* Switching Output: PNP

Mechanical:

- \* Homerun Connector: M23
- \* Connector Housing Material: PA66,Nylon+GF
- \* Box Material: PBT+PC
- \* Contact Material: Copper Alloy
- \* Contact Finish: Gold plated
- \* No. of Ports: 8
- \* Style: M12\*1
- \* Mounting type: 4 \* M4

Environmental:

- \* Operating Temperature : -25°C~+90°C
- \* Waterproof Rate: IP67 (Unmated)
- \* Oil Resistant



UNIT: mm

TOLERANCE	
.X	±0.25
.XX	±0.1
.XXX	±0.05
ANGLES	±1°

TITLE M12 Distribution Box 8Port, M23			
SCALE	SIZE	SHEET	OF
1:1	A4	1	2
REV.	WC-REV.	QC: Inspection item	
A	A.3		

Amphenol LTW

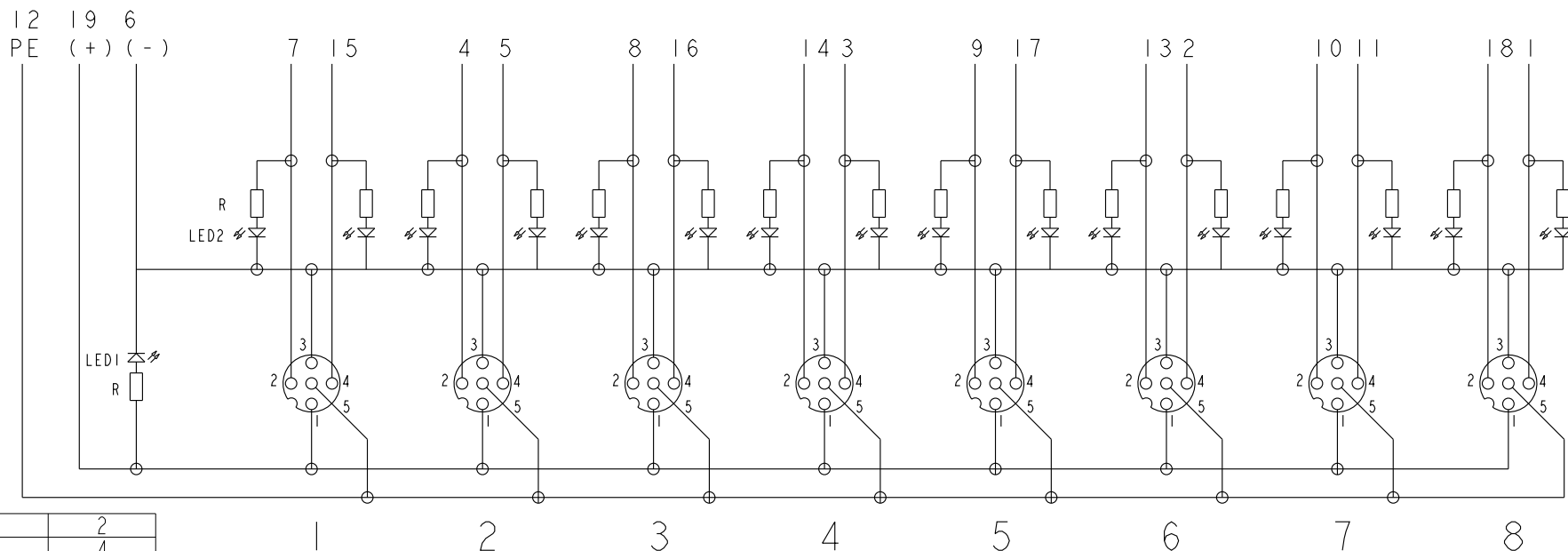
安費諾亮泰企業股份有限公司

ITEM NO.	DBI2-5A8M23-DPS7001	DRAWN BY	Tony_leng	DATE	2014/01/13
DWG NO.	DBI2-5A8M23-DPS7001	CHECKED BY	Jimmy	DATE	2014/01/13
CUSTOMER	ALTW	APPROVED BY	Jerry	DATE	2014/01/13

THIS DOCUMENT IS SUBJECT TO CHANGE WITHOUT NOTICE. IT IS CONFIDENTIAL AND A PROPERTY OF Amphenol LTW. DISCLOSURE TO THIRD PARTY HAS TO BE AUTHORIZED BY Amphenol LTW.

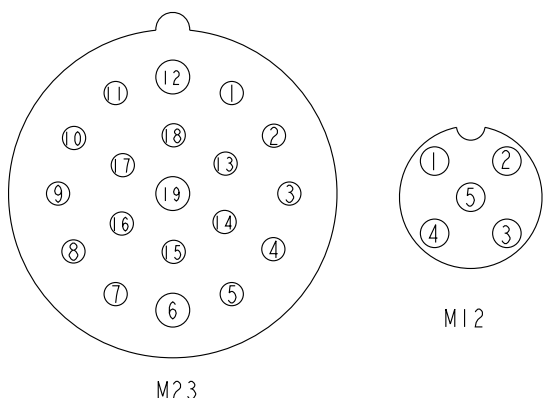
# Schematic Diagram

## M23 Homerun Connector



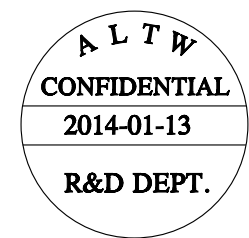
18	8	2
17	5	4
16	3	4
15	1	4
14	4	2
13	6	2
11	7	4
10	7	2
9	5	2
8	3	2
7	1	2
5	2	4
4	2	2
3	4	4
2	6	4
1	8	4
19(+V)	1-8	1
6(-V)	1-8	3
12(PE)	1-8	5
M23 Pin	Port	M12 Pin

## M12 I/O Ports



I/O Ports  
 Pin1: +V  
 Pin2: NC  
 Pin3: -V  
 Pin4: NO  
 Pin5: PE

Parts  
 LED1: Green  
 LED2: Yellow  
 R: Resistor



UNIT: mm	
TOLERANCE	
.X	±0.25
.XX	±0.1
.XXX	±0.05
ANGLES	±1°

TITLE M12 Distribution Box 8Port, M23			
SCALE 1:2	SIZE A4	SHEET 2 OF 2	
REV. A	WC-REV. A.3	QC: Inspection item	

**Amphenol LTW**  
 安費諾亮泰企業股份有限公司

ITEM NO DB12-5A8M23-DPS7001	DRAWN BY Tony_leng	DATE 2014/01/13
DWG NO DB12-5A8M23-DPS7001	CHECKED BY Jimmy	DATE 2014/01/13
CUSTOMER ALTW	APPROVED BY Jerry	DATE 2014/01/13

THIS DOCUMENT IS SUBJECT TO CHANGE WITHOUT NOTICE. IT IS CONFIDENTIAL AND A PROPERTY OF Amphenol LTW. DISCLOSURE TO THIRD PARTY HAS TO BE AUTHORIZED BY Amphenol LTW.