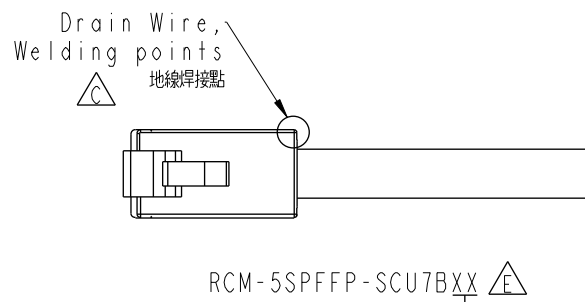
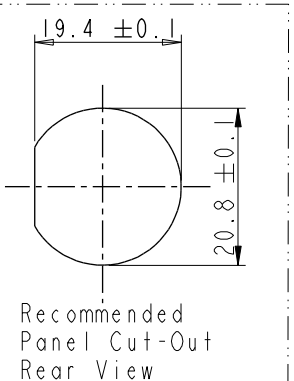
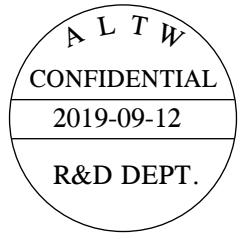
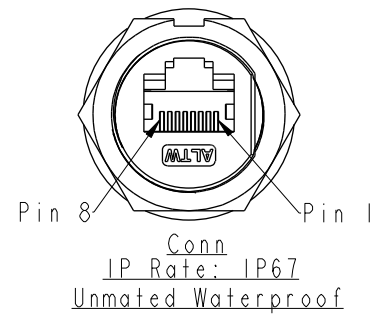
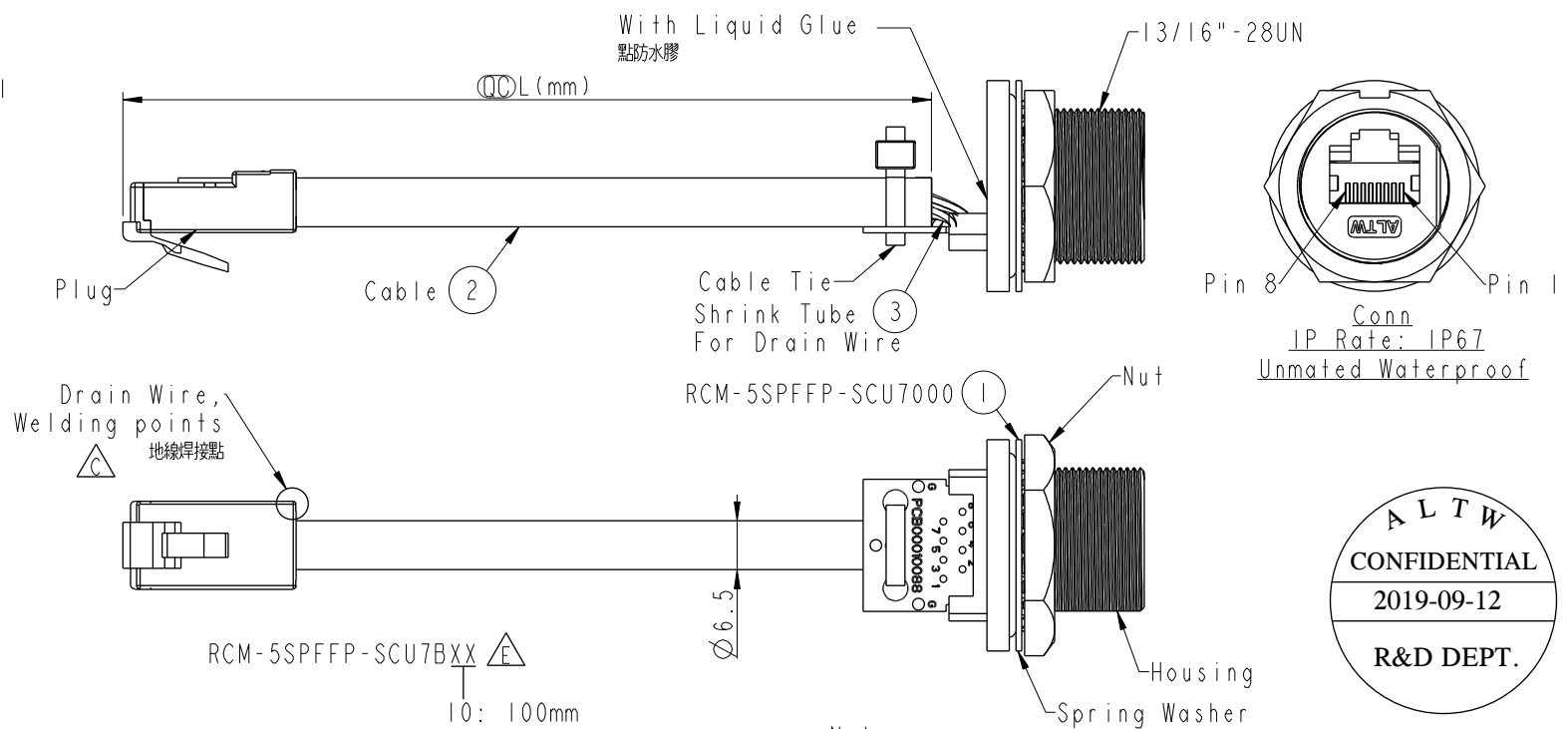


THIS DOCUMENT IS SUBJECT TO CHANGE WITHOUT NOTICE. IT IS CONFIDENTIAL AND A PROPERTY OF Amphenol LTW. DISCLOSURE TO THIRD PARTY HAS TO BE AUTHORIZED BY Amphenol LTW.

REV.	ECN NO.	DATE	SIGN	DESCRIPTION
C	LE31490050	2014/09/03	Feng_Li	Delete Shrink Tube
D	LEN14A0070	2014/10/03	Lodess	Change the note of twisting wires
E	EI91612	2019/09/12	Ruru	Drawing Code Unified Writing

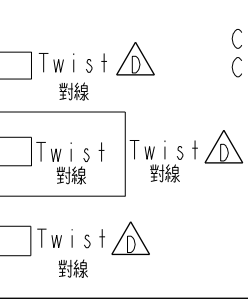


RCM-5SPFFP-SCU7BXX
 10: 100mm
 15: 150mm
 20: 200mm
 A0: 1000mm
 Cable Pitch Unit=50mm
 Cable Length(L):100~1000mm

Cable length	Tolerance
0.0~100 mm	±10 mm
101~300 mm	±15 mm
301~1000 mm	±20 mm

- Note:
- * \varnothing Important Dimension
 - * Panel Nut: Zinc Alloy, Nickel Plated
 - * Spring Washer: SUS304
 - * O-Ring: Silicone, Gray_Black
 - * Housing: Zinc Alloy, Nickel Plated
 - * Use with waterproof cap or dust cap for Panel Thickness Max: 3.0mm
 - * Use without waterproof cap or dust cap for Panel Thickness Max: 4.2mm
 - * Plug: 8P8C, Gold Plated, Shielded
 - * Recommend Torque for Panel Nut: 8~10kgf-cm
 - * Cable: CAT5E FTP 24AWG*4P+My+Drain+Al/My(UV Resistant), OD=6.5mm, Black

Shield	Drain Wire	地線	Shield
8	Borwn	棕	8
7	Brown /White	棕/白	7
6	Green	綠	6
5	Blue/White	藍/白	5
4	Blue	藍	4
3	Green/White	綠/白	3
2	Orange	橘	2
1	Orange/White	橘/白	1
Plug	Wire Color	Conn.2	



UNIT:mm		TITLE	RJ45,C SIZE,PCB W/CABLE	
TOLERANCE	.X ±0.25 .XX ±0.1 .XXX ±0.05 ANGLES ±1°	SCALE	1:1	SIZE A4
		REV.	E	WC-REV. A.4
			QC: Inspection item	

Amphenol LTW
 安費諾亮泰企業股份有限公司

ITEM NO	RCM-5SPFFP-SCU7BXX	DRAWN BY	Ruru	DATE	2019-09-12
DWG NO	RCM-5SPFFP-SCU7BXX	CHECKED BY	Rita	DATE	2019-09-12
CUSTOMER	ALTW	APPROVED BY	Max	DATE	2019-09-12