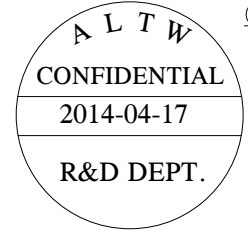
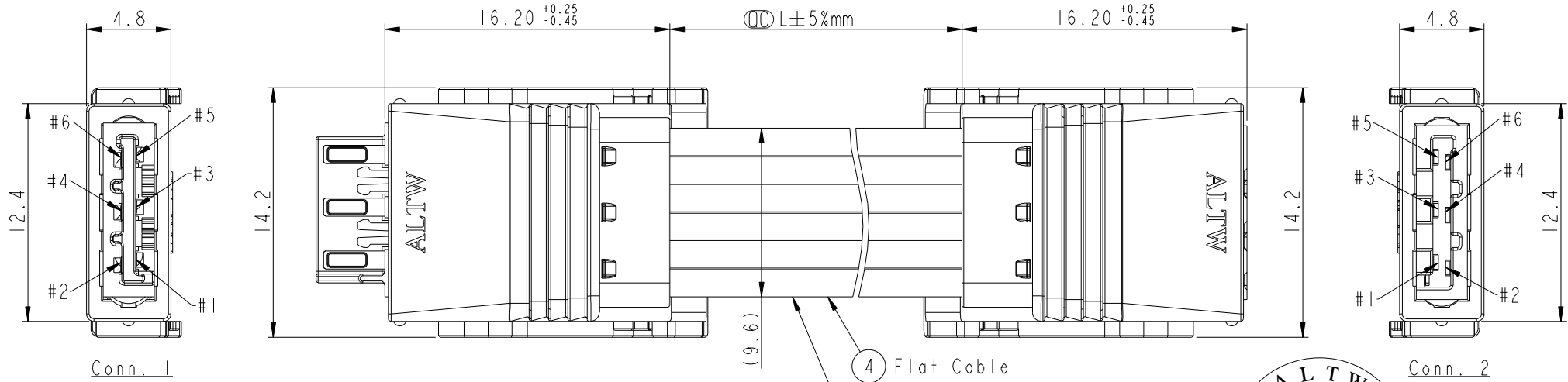
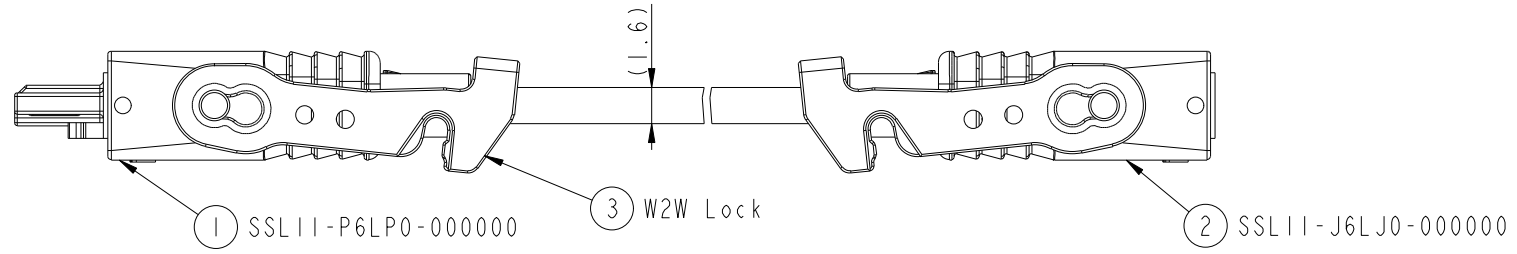


THIS DOCUMENT IS SUBJECT TO CHANGE WITHOUT NOTICE. IT IS CONFIDENTIAL AND A PROPERTY OF Amphenol LTW. DISCLOSURE TO THIRD PARTY HAS TO BE AUTHORIZED BY Amphenol LTW.

REV.	ECN NO.	DATE	SIGN	DESCRIPTION
A	Initial Release	2014-04-17	Fisher	Initial Release



6	White	白	6
5	White	白	5
4	White	白	4
3	White	白	3
2	White	白	2
1	Blue	藍	1
Conn. 1	Wire Color	Conn. 2	
Pin Out			

SSL11-P6LJP-T22DXX
 06: L=600mm.
 Cable Length Range
 (L): 100~9900 mm
 22: 22AWG
 LOCK&LATCH OPTION
 T: W2W LOCK X 2

- Notes:
- * \varnothing Important Dimensions To Check.
 - * Housing: Thermoplastic, UL94V-0, Natural White.
 - * Terminal: Copper Alloy, Gold Plated.
 - * Hood: Thermoplastic, UL94V-0, Natural White.
 - * SR Mold: PP, UL94V-0, Natural White.
 - * W2W Lock: Thermoplastic, UL94V-0, Natural White.
 - * Flat Cable: UL21016, 6F * 22AWG, XLPE Insulation, White

UNIT:mm		TITLE		ITEM NO		DRAWN BY		DATE	
		SSL1.1 Flat Cable, 6-Pos. W2W Lock X 2, Plug to Jack		SSL11-P6LJP-T22DXX		Fisher_Wang		2014-04-17	
TOLERANCE .X ±0.25 .XX ±0.1 .XXX ±0.05 ANGLES ±1°		SCALE	SIZE	SHEET	OF	DWG NO	CHECKED BY	DATE	
		3:1	A4	1	1	SSL11-P6LJP-T22DXX	Ivan_Lin	2014-04-17	
		REV.	WC-REV.	\varnothing : Inspection item		CUSTOMER	APPROVED BY	DATE	
		A	A.5			ALTW	Kevin_Hu	2014-04-17	
								8 FMW10702-01-02A1	

Amphenol LTW
 安費諾亮泰企業股份有限公司